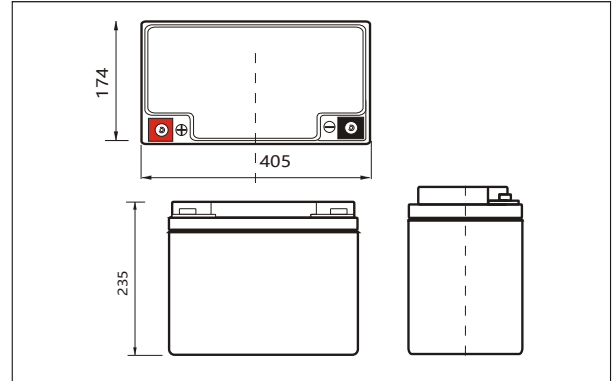


Lithium Iron Phosphate (LiFePO4) Battery Specification

SLAUMXLI60-24(25.6V60AH)



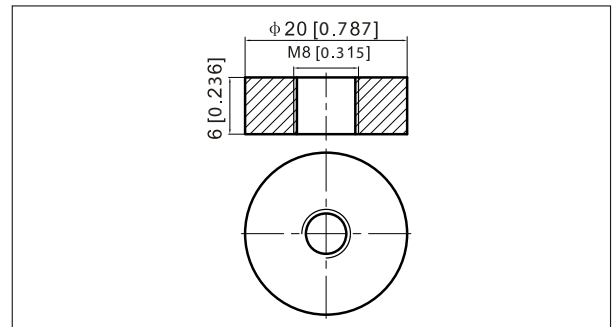
Outer dimensions (mm)



Specifications

Nominal Voltage		25.6V
Rated capacity (20 hour rate)		60Ah
Dimensions	Total Height	235 mm
	Height	235mm
	Length	405 mm
	Width	174 mm
Weight Approx		14.5 Kg
Terminal		M8

Terminal Type (mm)



Characteristics

Capacity Retention	>80% at 28 days	
Cycle Life	>80% at 2000 Cycles	
1.5 hour discharge to 29.2V	3.00 A	
Internal Resistance	<20 mΩ	
Charge Characteristics	Charge Voltage	29.2±0.1V
	Charger Current	<60A
Discharge Characteristics	Max Continuous Current	60A
	Min Discharge Cut-off Voltage	20V
Temperature	Charge Temperature	0°C-45°C(32°F-113°F)
	Discharge Temperature	-20°C-60°C(-4°F-140°F)
	Storage Temperature	0°C-40°C(32°F-104°F)

Discharge Curves 25°C(77 °F)

